

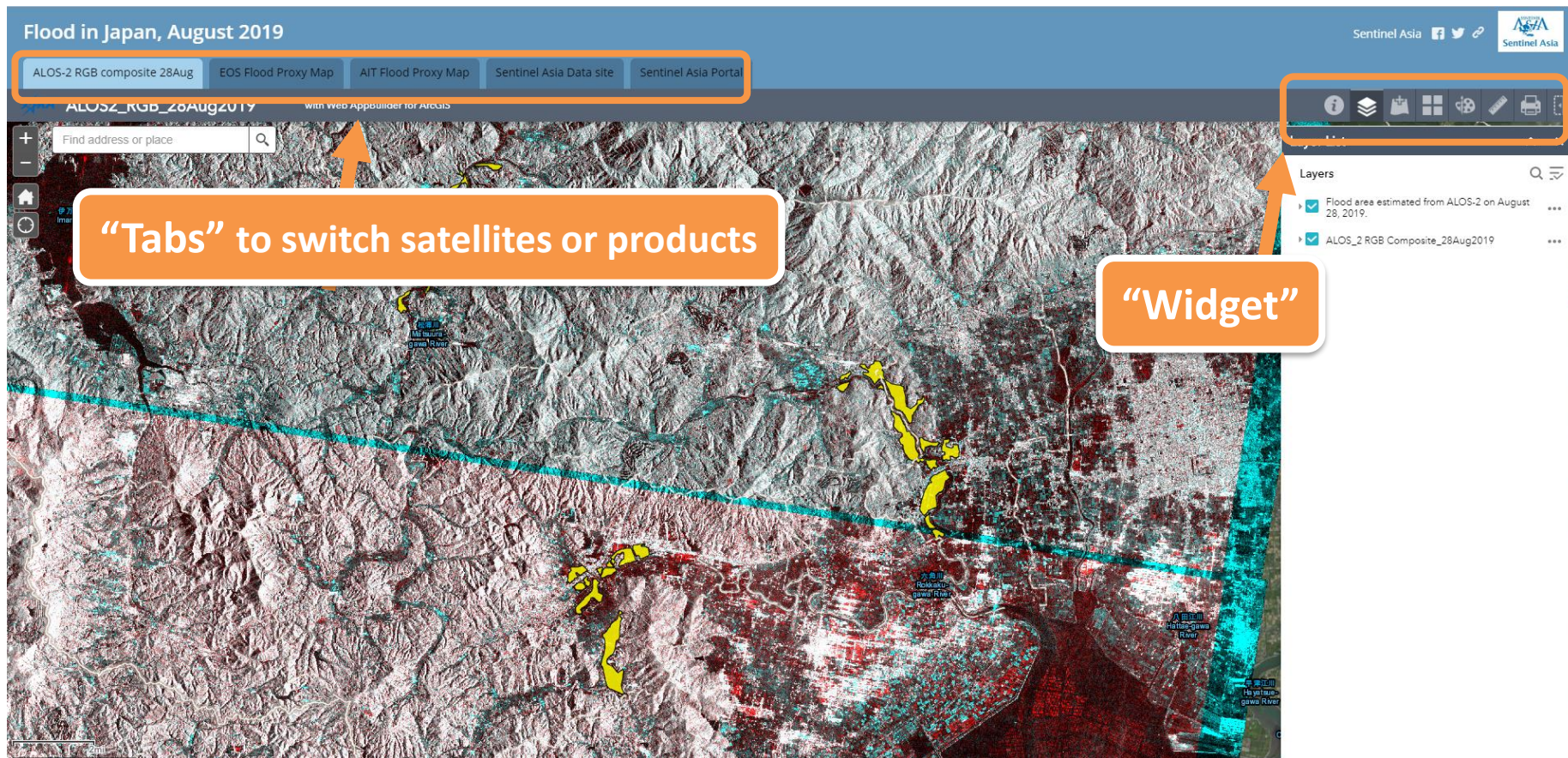
Web-GIS operation

2019.11.13

Japan Aerospace Exploration Agency (JAXA)
Satellite Applications and Operations Center (SAOC)

Yuki Takakura

Web-GIS page of Flood in Japan, August 2019



■ Purpose

In order for all members to handle very easy with your senses, **even those who are not familiar with satellite data handling.**

■ FROM NOW

- JAXA have created Web-GIS page for each disaster on a trial basis from Aug. 2017.
- After creating it, we have informed each requesters of its URL and an account.

■ FUTURE

- We will informed each organization of an account (After JPTM)
- You will be able to see Web-GIS page from each disaster page of Sentinel Asia's web site (<https://sentinel-asia.org/>), whenever you want to see.

2019-08-28

Northern Kyushu flood due to heavy rain once every decade, in August

Emergency Obs. Request Information



Disaster Type: Flood

Country: Japan

Occurrence Date (UTC): 2019-08-28

SA activation Date(UTC): 2019-08-28

Requester: National Research Institute for Earth Science and Disaster Resilience (NIED)

Escalation to the International Charter: Yes

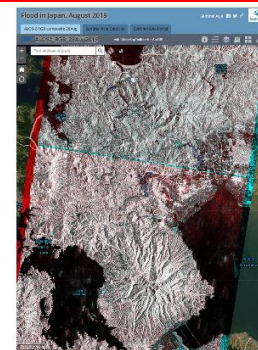
GLIDE Number:

Disaster Situation

Torrential rain hit southwestern Japan on August 28 Wednesday morning, prompting local governments to instruct thousands of people to evacuate as rivers overflowed in what the weather agency called an 'unprecedented downpour' that left at least two people dead. In Saga Prefecture in the Kyushu region, JR Saga Station was flooded and a number of vehicles were seen submerged, while landslides were confirmed in the city of Takeo and rivers in Ogi and Imari overflowed, flooding nearby farm fields.
<https://www.japantimes.co.jp/news/2019/08/28/national/special-landslide-flood-warnings-issued-downpours-hit-western-japan/#:~:q=XWdIcGzYUJ> (from ©Japan Times)

Web GIS

· Flood in Kyushu, August 2019
 ALOS2_RGB_28Aug2019



SA's each disaster page
[\(https://sentinel-asia.org/\)](https://sentinel-asia.org/)

Click here



About

You can see Description and Copyright



Layer List

All layers are listed.
You can choose layers which you want to display.



Basemap Gallery

You can chose Basemap.



Swipe

You can swipe satellite data/products and compare them easily.



Add Data

You can add data in the selected tab.



Draw

You can draw any figures and characters.



Measurement

You can measure any area and line.



Print

You can print or download the figure even edited by “Draw” Widget.

I'll show you how to use these Widgets easily.

This Web-GIS is used now **Trial Period** (at least until Mar. 2020)

➤ Request feedbacks

- We now select 8 Widgets that seems useful, but please let us know if you want other useful Widgets or functions.
- I might ask for a questionnaire later.

➤ Considering of making it automatically

- Now we create this Web-GIS page manually during our working hours, so data uploaded at night and on holidays is not reflected immediately.
- We start the consideration of creating Web-GIS page automatically.

➤ Linking other systems

- We consider linking other systems (ex. Rainfall watching system, Hot spot information, other GIS), so please let us know if you have something to link with.

➤ Welcome to Colleagues

- If anyone who can help with the automatic creation of Web-GIS page, or anyone who can make a similar system by yourselves, you're most welcome!!

Thank you !!

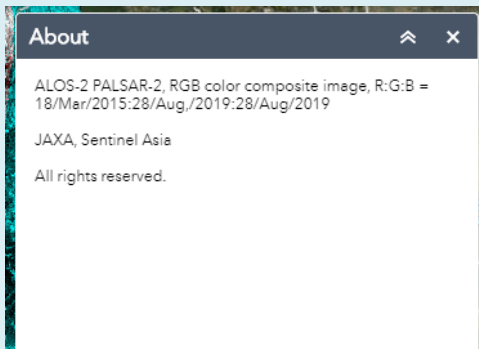
参考資料

About Widgets



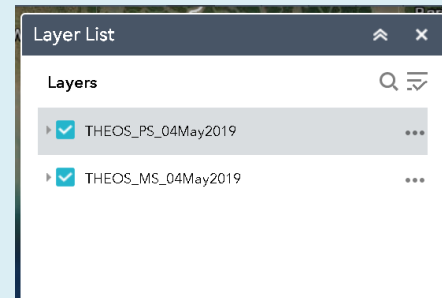
About

Description and
Copyright are written.



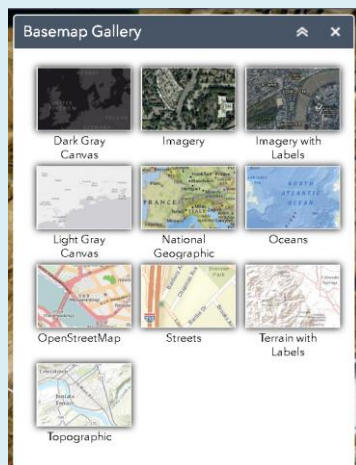
Layer List

All layers are listed.
You can chose layers
which you want to
display.



Basemap Gallery

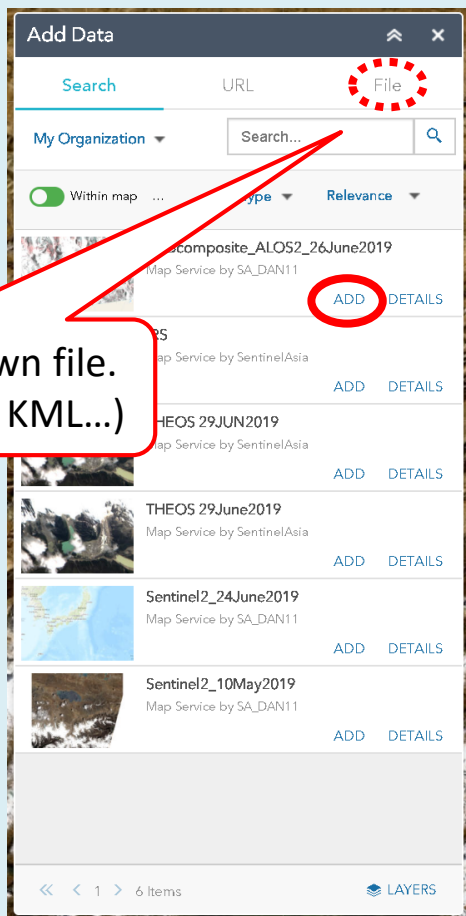
You can chose Basemap.





Add Data

You can add data in the selected tab.

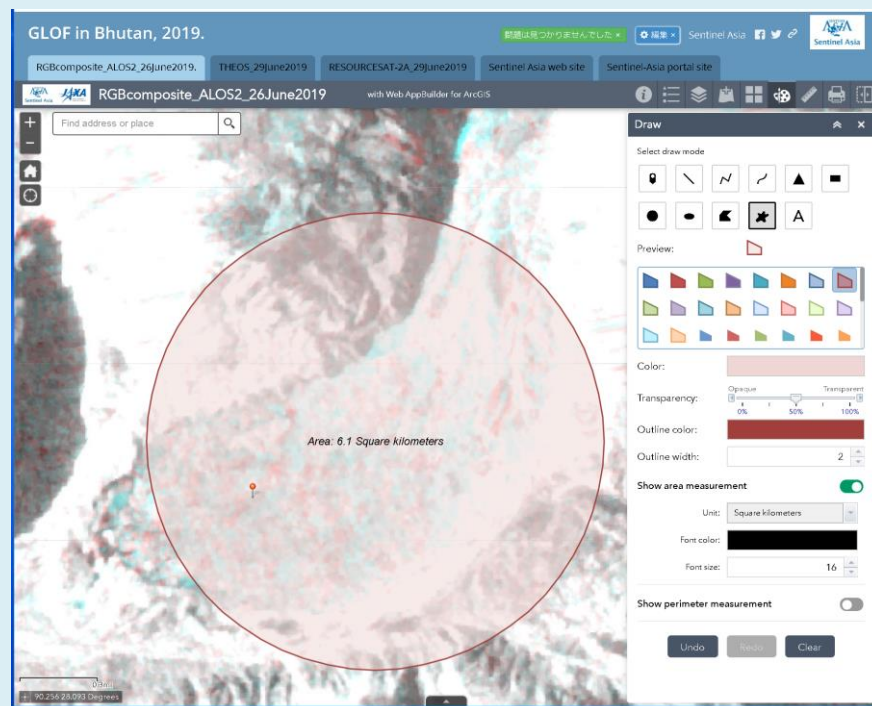


You can add your own file.
(ex. Shape File, CSV, KML...)



Draw

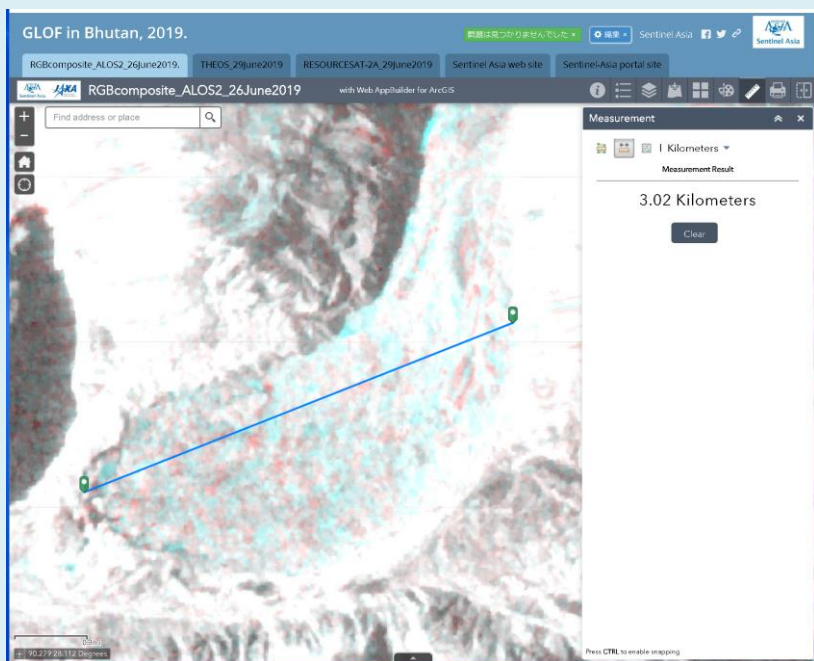
You can draw any figures and characters.





You can measure any area and line.

Measurement



Print

You can print or download the figure even edited by “Draw” Widget.

Setting

Map scale/extent:

Preserve: map scale
 map extent

Force scale: [current](#)

Output spatial reference **WKID** :

WGS_1984_Web_Mercator_Auxiliary_Sphere

Layout metadata:

Author:

Copyright:

Include legend:

Scale bar unit:

MAP_ONLY size:

Width (px):

Height (px):

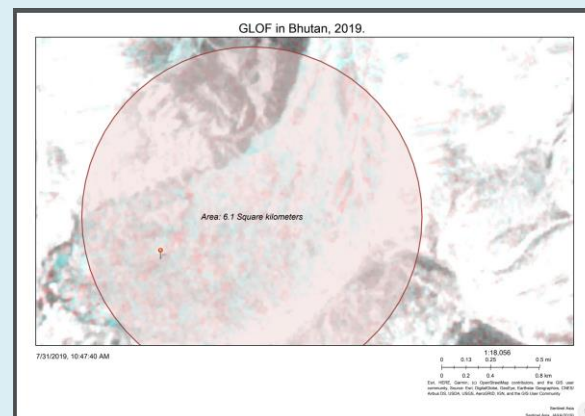
Print quality:

DPI:

Feature attributes:

Include attributes:

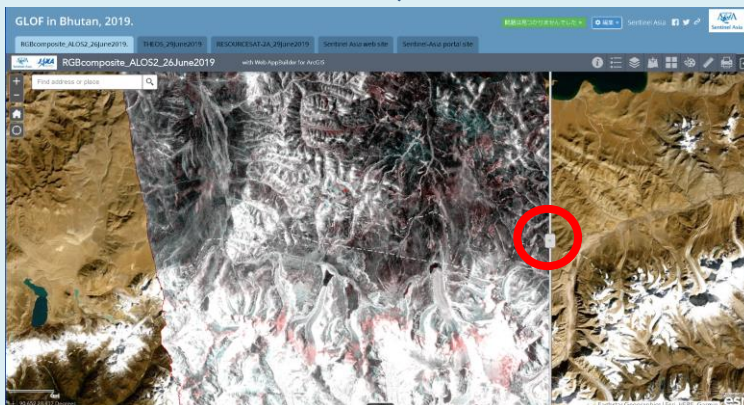
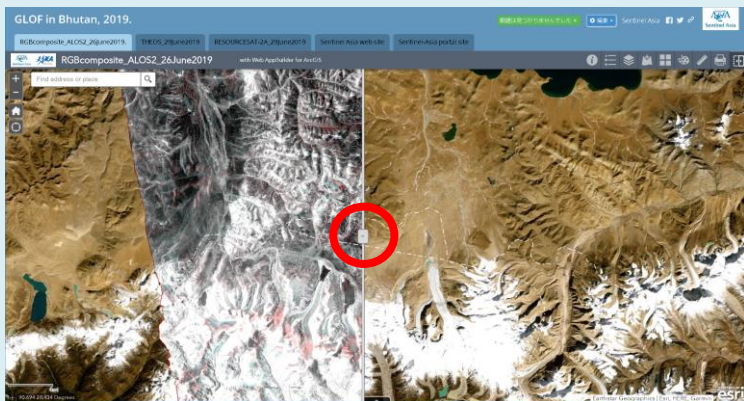
Preview





You can swipe satellite data/products and compare them easily.

Swipe



When you display some layers, you can change the layer swiped.

