



Result of questionnaires after each emergency observation request

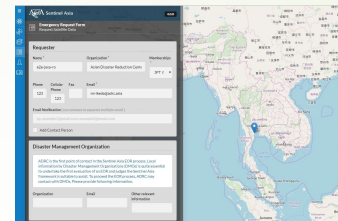
**Makoto Ikeda, Asian Disaster Reduction Center
(ADRC)**

*The 8th Joint Project Team Meeting (JPTM)
"Expand Space Innovation through Diverse Partnerships"
September 17th-18th, 2023*

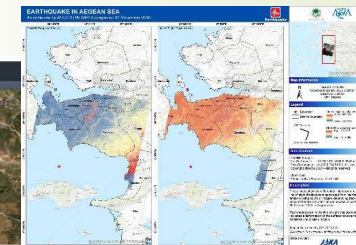
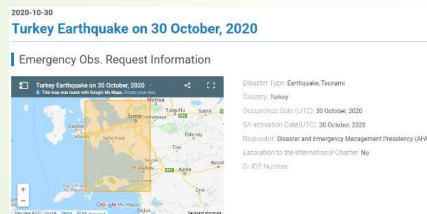
Auditorium room, BRIN Headquarter located at Jalan MH Thamrin Jakarta

Emergency Observation Request (EOR)

1. To make an Emergency Observation Request



2. To activate EOR and provide data sets



3. To answer a Questionnaire on EOR **today's topic*

Questionnaire on Emergency Observation Request.

Sentinel Asia would like requesters to give an important feedback to improve the system. It would be great if you could help our work.

(around 1 month later after your request)

Questionnaire on EOR (Contents)

- ✓ Which of the following emergency response activities were your work using with satellite images and value added products? (Multiple choice)
- ✓ Could you show us how you used the data provided by Sentinel Asia more detail?
- ✓ Did our response or provided data meet your expectations?
- ✓ If you were not fully satisfied the Sentinel Asia data, please provide further details.
- ✓ If you did not use data provided by the Sentinel Asia, please explain why they were not used.
- ✓ What do you expect Sentinel Asia for your work ? (Multiple Choice)
- ✓ Which of the following natural disaster do you expect disaster risk reduction by Sentinel Asia?
(Multiple Choice)
- ✓ About you (Name, organizaion, contact address, country/region)

Questionnaire on EOR (Today's report)

- ✓ Which of the following emergency response activities were your work using with satellite images and value added products? (Multiple choice)
- ✓ Could you show us how you used the data provided by Sentinel Asia more detail?
- ✓ Did our response or provided data meet your expectations?
- ✓ If you were not fully satisfied the Sentinel Asia data, please provide further details.
- ✓ If you did not use data provided by the Sentinel Asia, please explain why they were not used.
- ✓ What do you expect Sentinel Asia for your work ? (Multiple Choice)
- ✓ Which of the following natural disaster do you expect disaster risk reduction by Sentinel Asia?
(Multiple Choice)
- ✓ About you (Name, organizaion, contact address, country/region)

Questionnaire on EOR (Actual use)

- ✓ Which of the following emergency response activities were your work using with satellite images and value added products? (Multiple choice)



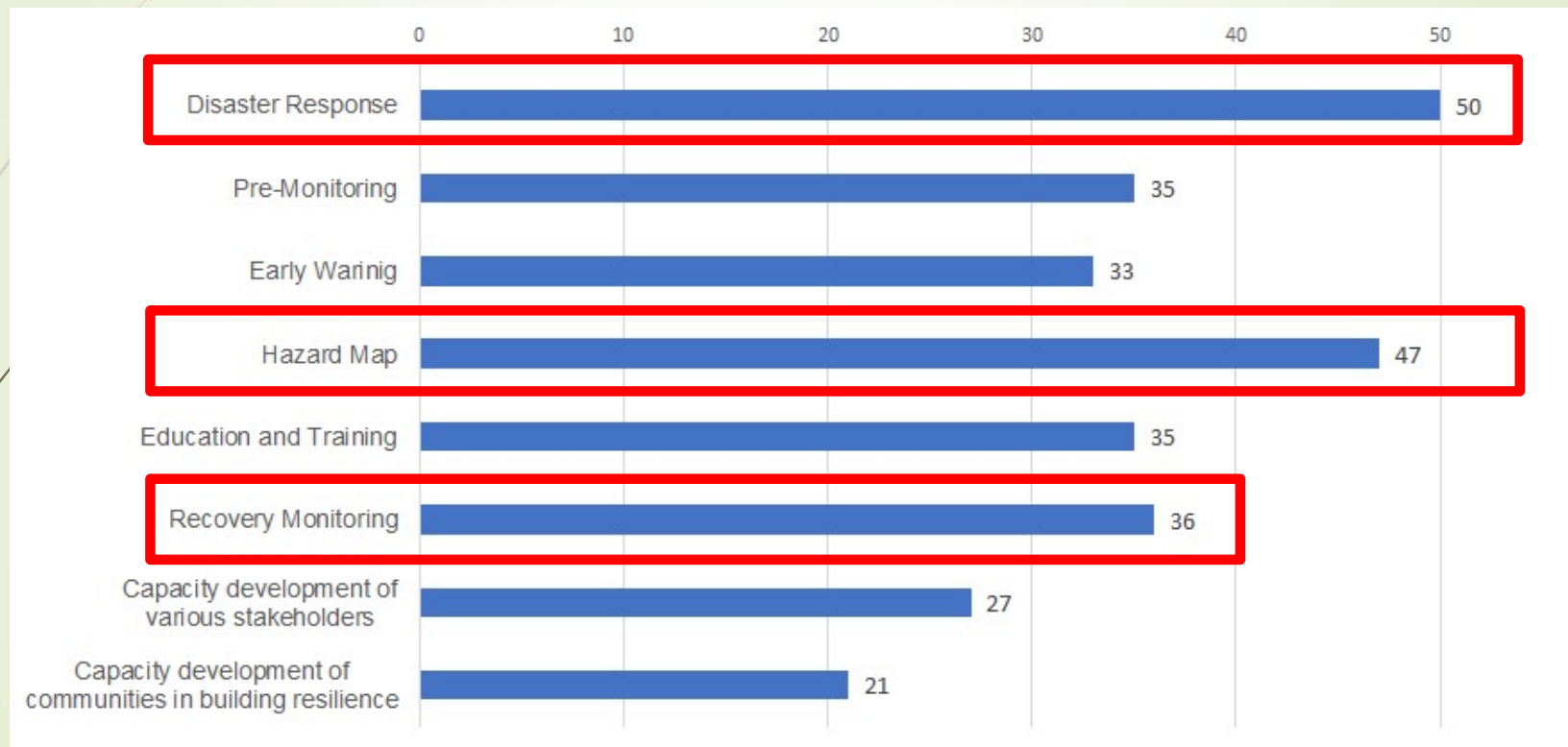
Actual-use is used for “emergency response phase” and “recovery phase”. It is roughly in line with expectation.

Questionnaire on EOR (Specifically)

- Inundation maps were prepared with decision makers for coordination of response
- The data provided by Sentinel Asia is utilized in generating near real time inundation maps which were used by response agencies to identify flood affected areas and provide relief and rehab measures
- The satellite images were sent to local partners who are affected by the typhoon and flooding. Some partners who are not directly affected by the disaster said that they can use the products in raising funds. Others used the data to assess the damages and to build back better. Partners in the affected area were also asked to validate the maps
- To develop a map of flood quick assessment to support for damage assessment and evacuation plans and emergency response.
- We have used the imageries to see extent of ashfall in areas around the volcano. It also gives us evidence to validate in the field.

Questionnaire on EOR (Expectation)

✓ What do you expect Sentinel Asia for your work ? (Multiple Choice)



Provided data are expected to use for not only “emergency response phase” but also “recovery phase” and “hazard map”.

Points of view

- Provided data are used for on-site activities such as “Emergency response”, “monitoring”, “making evacuation planning”, “sharing to local governments”, “field survey”, etc.
- These feedbacks are following a Concept of Sentinel Asia Strategic Plan.

Concept of Sentinel Asia Strategic Plan

“Challenges for Disaster Risk Reduction by a Collaboration between Space and Disaster Management Agencies”

MITIGATION

- Hazard Map
- Early Warning
- Success Story
- Pre-disaster monitoring

RECOVERY

- Mid/Long-term monitoring
- Recovery Status



PREPADNESS

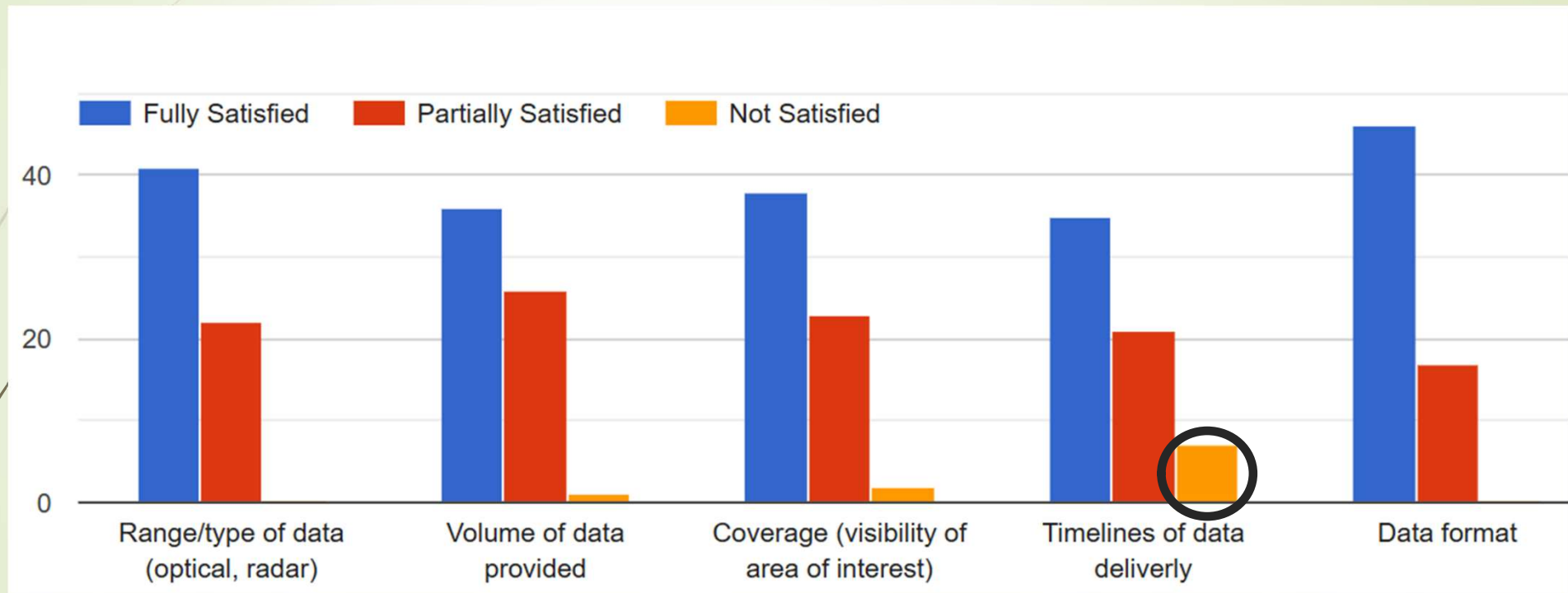
- Training
- Capacity Building
- Standard Operation Procedure (SOP)

RESPONSE

- Emergency Observation
- Data Analysis
- Damage Assessment

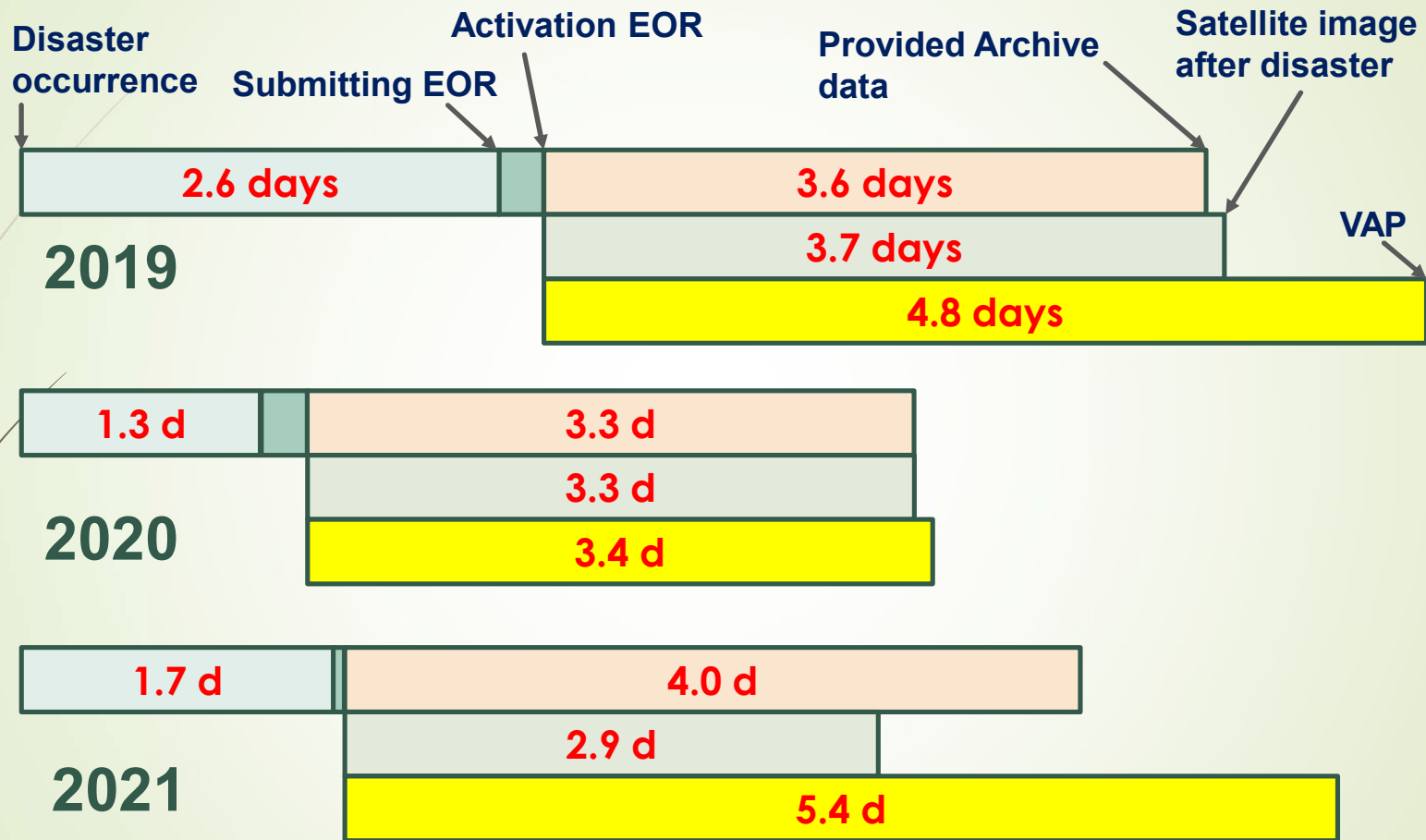
Questionnaire on EOR (Impression)

✓ Did our response or provided data meet your expectations?



**It was slightly not satisfaction regarding “Timeline of data deliver”.
How about actual data???**

Questionnaire on EOR (Days for providing)



Need to consider a “swift activation after disaster”

-> SOP is one of our suggestion (to be explained on DAY 2)