

WFP's Geospatial Innovation for Improved Humanitarian Response

ImpactAI

- 8 Countries
- 12 Disasters
- 50 WFP beneficiaries
- 45,000 buildings annotated



ImpactAI

AI-based building damage (impact) classification caused by disaster or conflict

No damage	Major damage
Minor damage	Destroyed



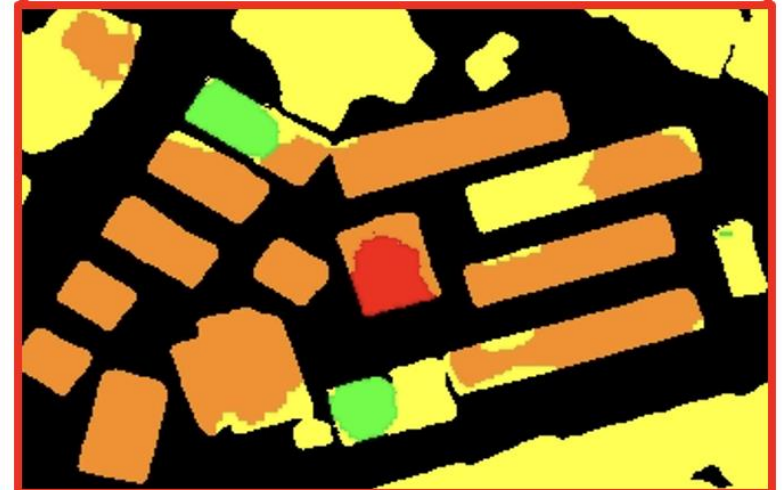
Pre-disaster image



Post-disaster image

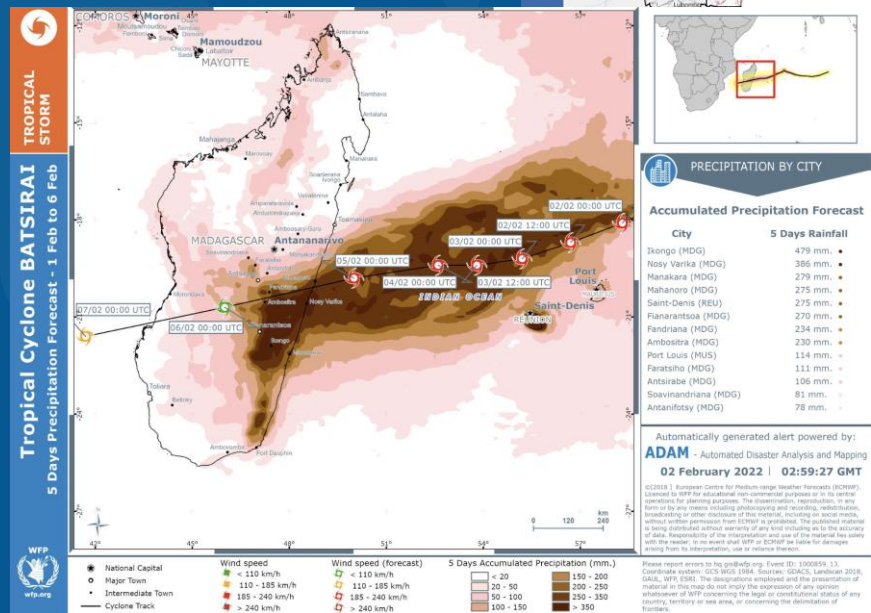
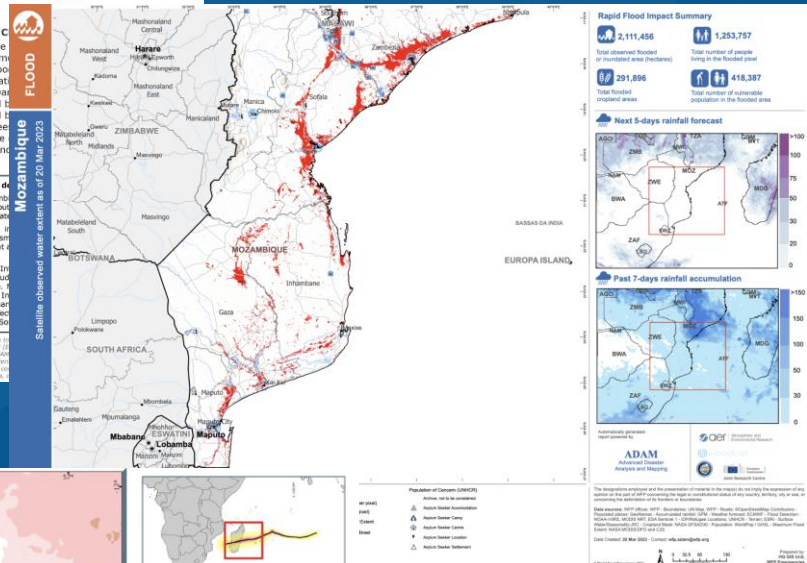
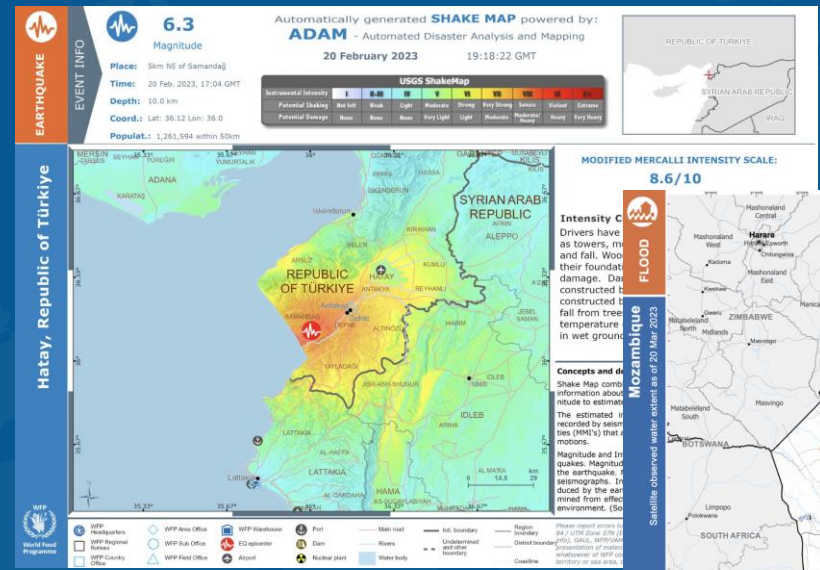


Predictions



Advanced Disaster Analysis and Mapping

- Open access (gis.wfp.org/adam)
- Open data
- 250+ disaster reports
- Floods, Earthquake, Tropical Cyclone
- Near Real-time
- Global Coverage (WFP)



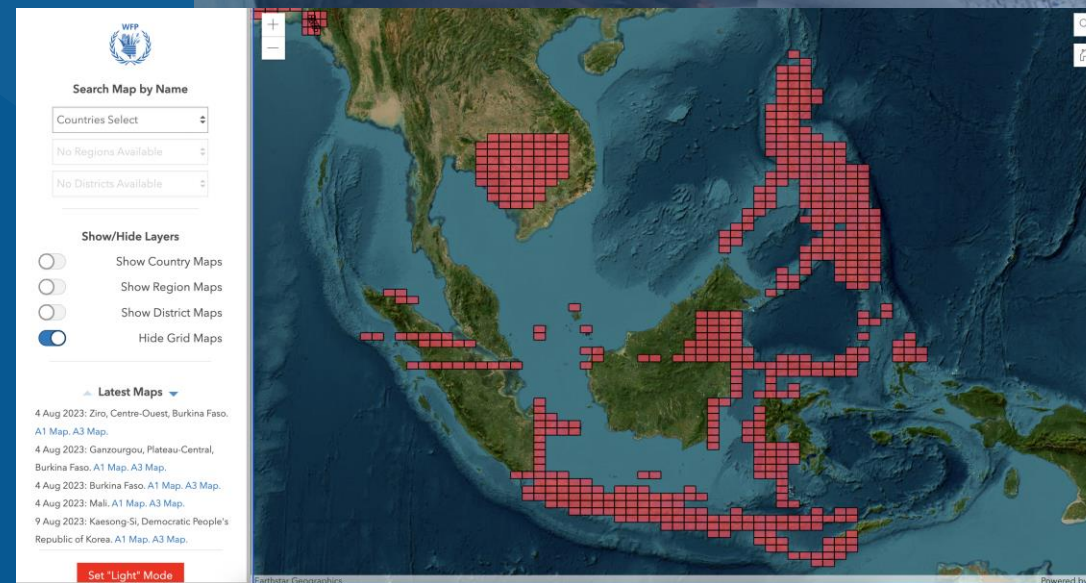
The screenshot displays the ADAM Live Map interface. At the top left is the WFP logo and the title "ADAM Live Map by WFP HQ GIS". A search bar with the placeholder "Find address or place" and a search icon is located at the top center. On the left side, there is a vertical toolbar with icons for zooming in (+), zooming out (-), home, and location. A legend panel is open, showing the following categories and symbols:

- EQ Events**
 - Magnitude
 - Red (> 6.5 - 10)
 - Orange (> 5.5 - 6.5)
 - Green (< 5.5)
- TS Events**
 - Green
 - Orange
 - Red
- FL Events**
 - Blue globe icon
- FL Alerts**
 - Blue globe icon

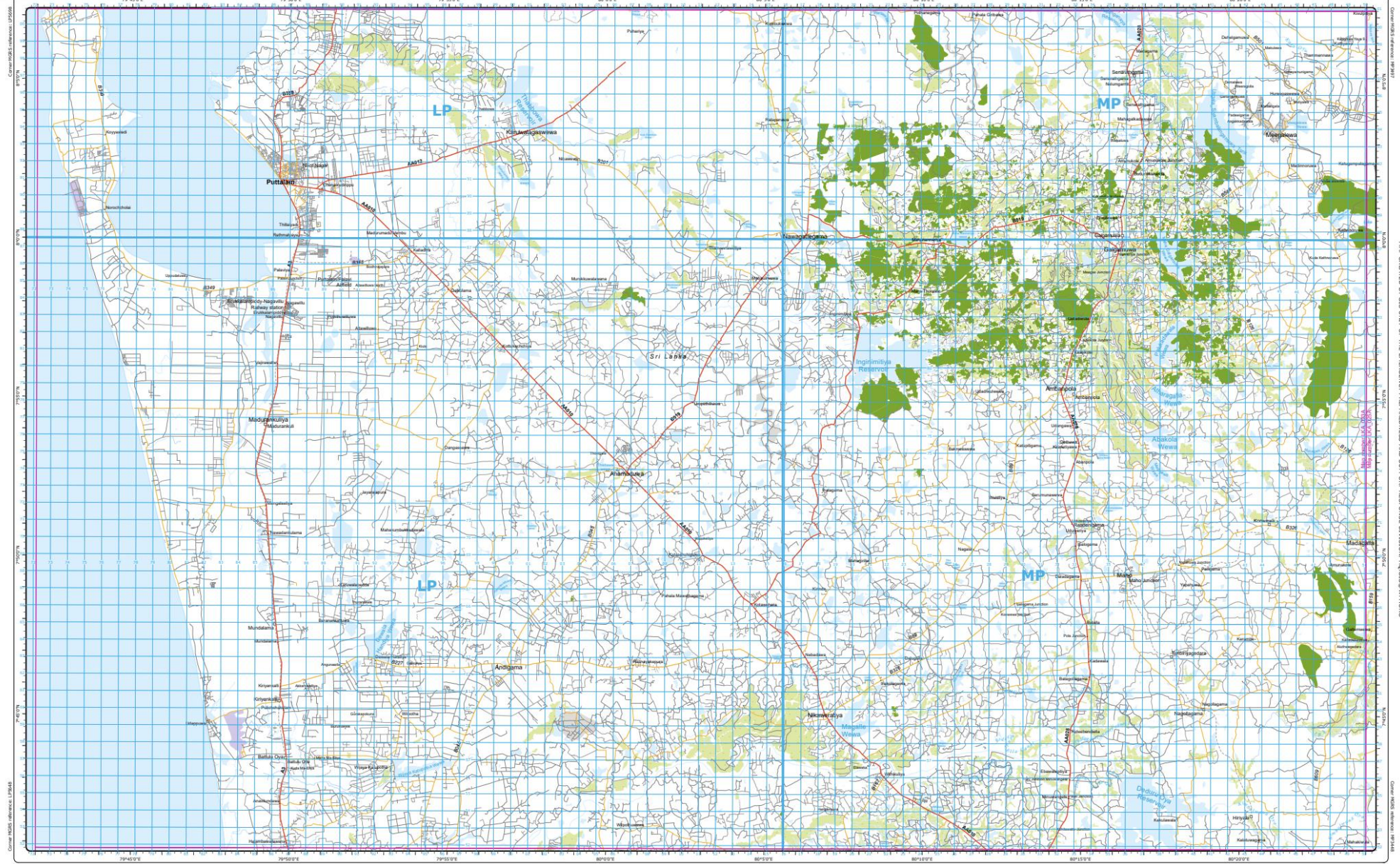
The map shows various event markers across the globe. A red earthquake marker is visible in the Atlantic Ocean. Orange earthquake markers are scattered in the South Atlantic, Indian, and Pacific Oceans. Green earthquake markers are located in the Mediterranean, East Africa, and Southeast Asia. A blue globe icon is positioned over Nigeria. A tsunami marker (green swirl) is located in the western Pacific Ocean near Japan. The map also displays country names and major cities. At the bottom left, there is a scale bar for 1000km and a "loading..." indicator. At the bottom center, there is a toolbar with icons for layers, grid, print, and other map functions. At the bottom right, it says "POWERED BY" with a logo.

Humanitarian Topographic Atlas

- Open access (hta.gis.wfp.org)
- 30 Countries
- 2000 High resolution detailed maps
- Easily Accessible
- Real time updates



Goal of HTA is to create high-resolution maps for use with WFP field operations.



Date of production: 27 September 2021
Download this map: <https://hita.gis.wfp.org>

Scale: 1:1,000,000
 0 1 2 3 4 5 Miles
 0 1 2 3 4 5 10 Km

GRID ZONE DESIGNATION: 44P
 UTM ZONE: 44P
 GRID ZONE: 44P

TO GIVE A STANDARD REFERENCE ON THIS SHEET TO NEAREST QUANTITIES, PLEASE REFER TO THE SYSTEMS:

POPULATED PLACES	WFP REGIONAL OFFICE	WFP CAMP	RAILWAY	INTERNATIONAL BOUNDARY	RESIDENTIAL
City (>100,000)	WFP country office	IDP center	Highway	Undetermined	Green area
Town (>10,000)	WFP area office	IDP location	Primary road	Province	Industrial
Village (>1,000)	WFP sub office	Refugee camp	Secondary road	District	Forest
Hamlet (<1,000)	WFP field office	Refugee center	Tertiary road	Water body	Island
Country		Other location	Track/rail	River	Wetland
Province		Population location	Residential		
District			Publicbody		

WFP World Food Programme

HUMANITARIAN TOPOGRAPHIC ATLAS

Refer to this map as Sri Lanka 023A

Humanitarian Topographic Atlas (HTA) is a collection of topographic maps primarily based on open data, created by WFP for supporting disaster response during humanitarian crises. The primary goal of HTA is to create a high-quality, highly readable and aesthetically pleasing topographic map covering the areas with WFP field operations.

The map features both contour lines and relief shading derived from SRTM data. Topographic features, roads, place names and all other map features are from the OpenStreetMap project. HTA maps are updated automatically on a regular basis. Therefore, the map may contain the data from the OpenStreetMap database at date and time when the map was last updated. If you notice any change in OpenStreetMap, it will appear also on HTA maps after the next update. The date of the next planned update for this map is the 27/10/2021.

The designations employed and the presentation of material in this map do not imply the expression of any opinion whatsoever of WFP concerning the legal or constitutional status of any country, territory or sea area, or concerning the delimitation of frontiers.

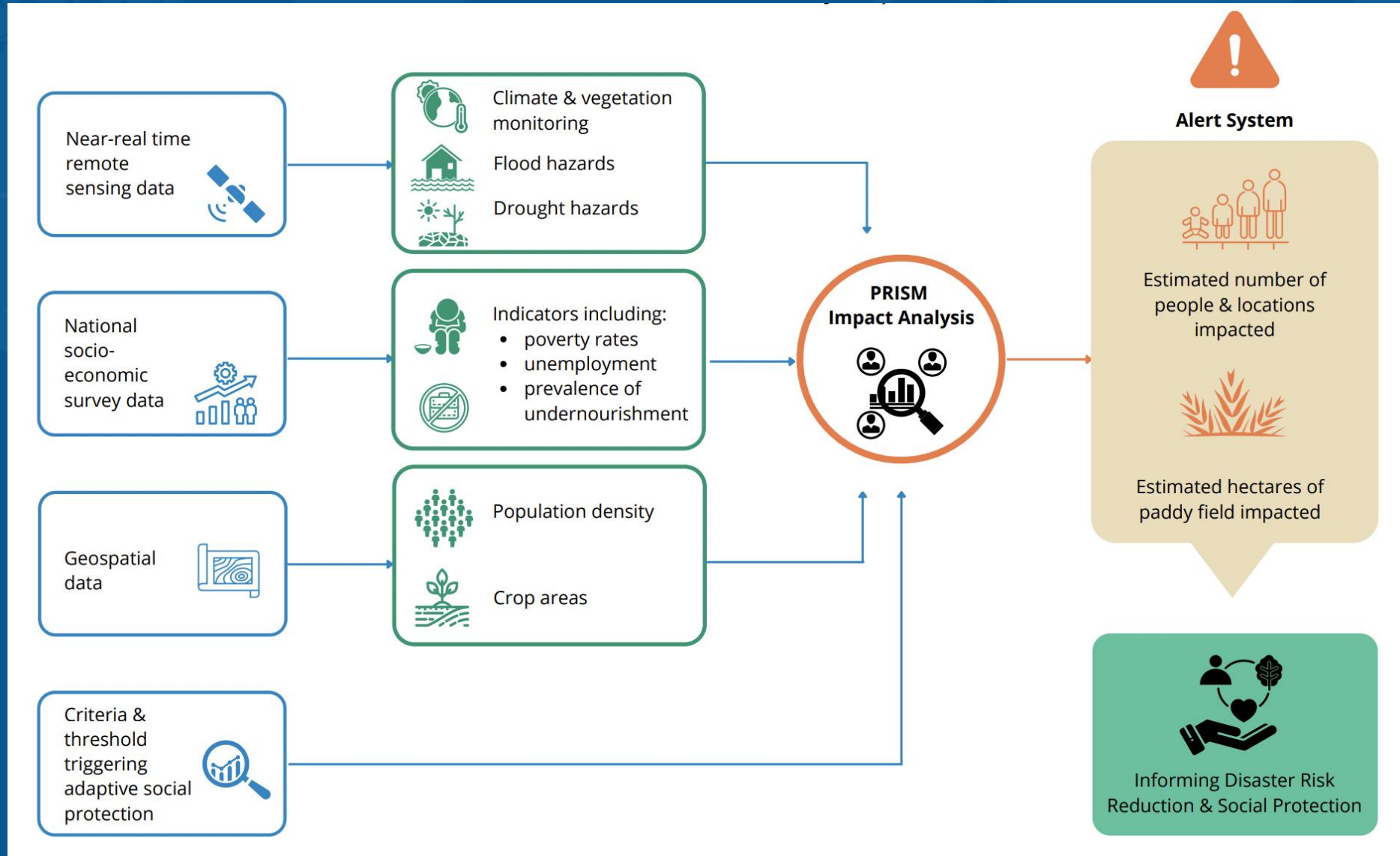
HTA maps will constantly be improved and updated. HTA maps are available under the Open Data Commons Attribution (ODC-BY) license (www.opendatacommons.org/licenses/by/). Therefore, HTA maps are available under the CC-BY-SA license as well. IDP and Refugee locations are provided by UNHCR. If you need more frequent updates or need HTA maps for other areas that are not already inside the HTA project, please write to hita@wfp.org.

Contour lines are marked with elevation labels in meters. Most features on the map, such as cities, roads, land usage and services come from the OpenStreetMap project. HTA maps will constantly be improved and updated. HTA maps are available under the Open Data Commons Attribution (ODC-BY) license (www.opendatacommons.org/licenses/by/). Therefore, HTA maps are available under the CC-BY-SA license as well. IDP and Refugee locations are provided by UNHCR. If you need more frequent updates or need HTA maps for other areas that are not already inside the HTA project, please write to hita@wfp.org.

The designations employed and the presentation of material in this map do not imply the expression of any opinion whatsoever of WFP concerning the legal or constitutional status of any country, territory or sea area, or concerning the delimitation of frontiers.

PRISM

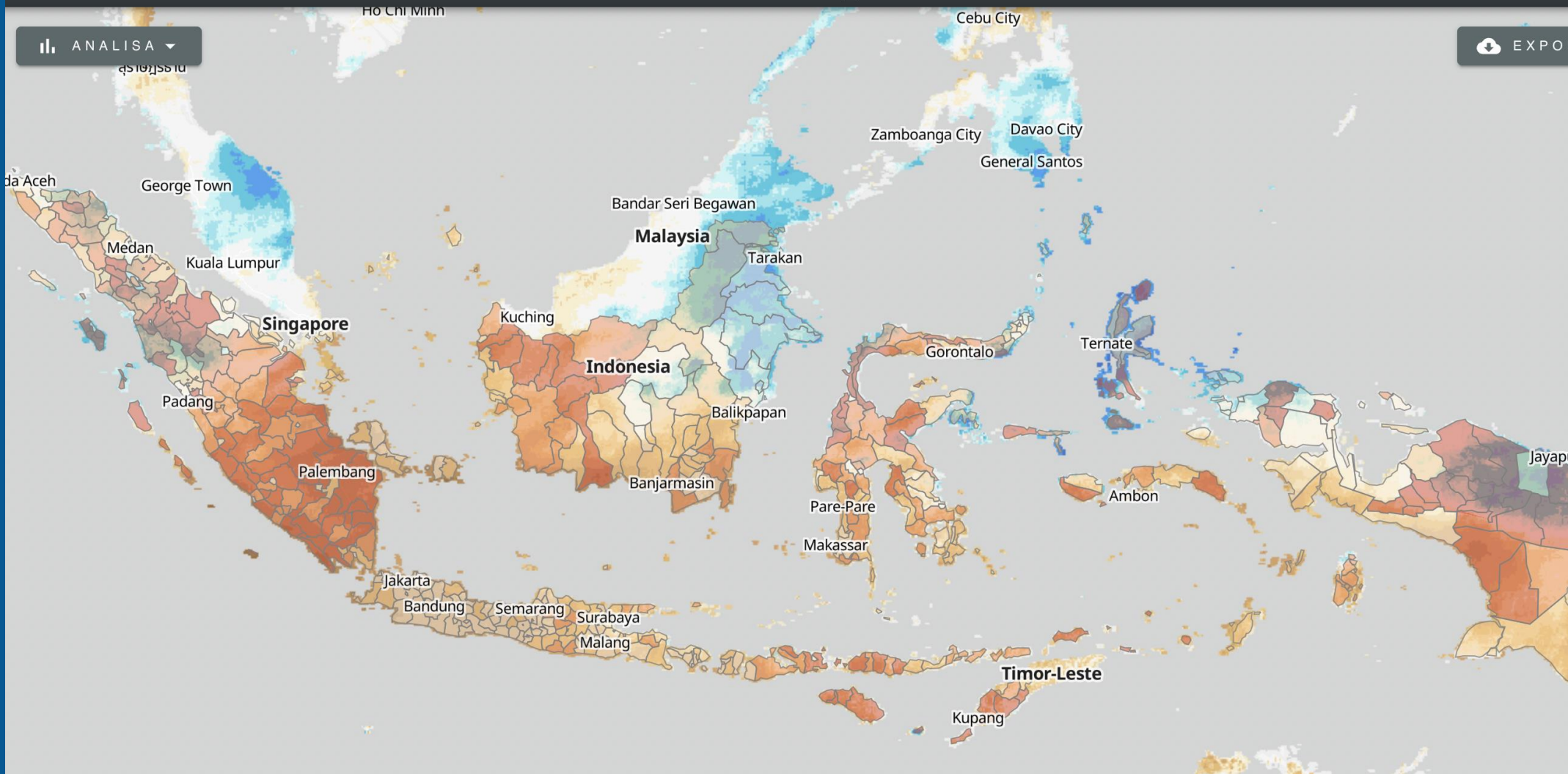
Platform for Realtime Impact and Situation Monitoring



ANALISA

EXPORT

LEGENDA



Monthly rainfall anomaly

110-120%
120-130%
130-150%
150-200%
200-300%
300-400%
> 400%

Monthly precipitation anomaly compared to the long term average. Derived from CHIRPS (UCSB Climate Hazards Group). <https://www.chc.ucsb.edu/data/chirps>

DOWNLOAD

Mount Hagen

Masyarakat Hidup Dari Sektor Agrikultur

≤ 14.91
14.92 - 33.98
33.99 - 44.71
44.72 - 54.87
> 54.87

SEP 11, 2023

SEPTEMBER 2023

OCTOBER 2023

NOVEMBER 2023

DECEMBER 2023

HungerMapLIVE



HungerMap ^{LIVE}

SUBSCRIBE

Navigate

Select a country | v

Access PDF reports ⓘ

Download an analysis | v

Conflict Alerts ^

Countries with ≥ 1 fatality /200,000 in the last 30 days.

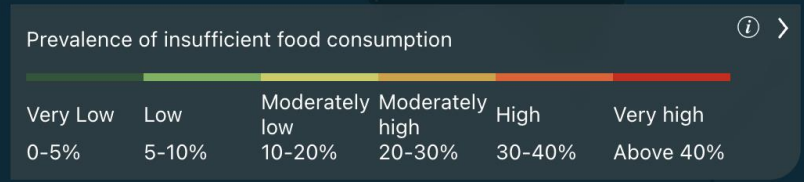
Climate Alerts

% of people living in areas with significant rainfall or vegetation deficit > 15%

% of people living in areas with significant excess rainfall > 15%

0.71B
Total number of people with insufficient food consumption

17
Number of countries with very high levels of hunger



- Hazards
- Conflict
- Current Food Consumption
- Vegetation
- Rainfall
- IPC/CH



World Food Programme

HungerMap ^{LIVE} | Myanmar ^{PREDICTED}

SUBSCRIBE

Food Security

Population
53.7 M

People with insufficient food consumption
11.3 M
↑ 0.02 M increase from 3 months ago
↓ 0.02 M decrease from 1 month ago

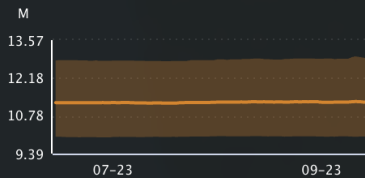
Nutrition

Acute malnutrition
6.6 % of children (under 5)

Chronic malnutrition
29.4 % of children (under 5)

Food Security Trends

Trend of the number of people with insufficient food consumption



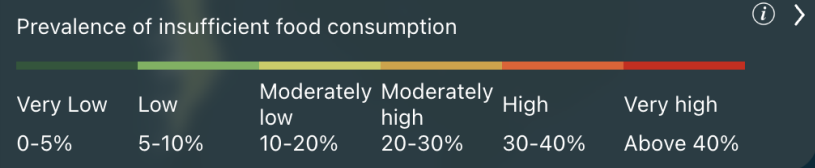
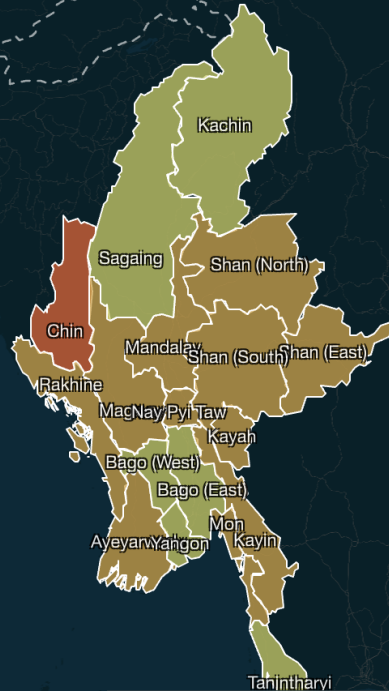
Trend of the number of people using crisis or above crisis food-based coping

No Data

Back to Global



- Macro-economic
- Currency exchange
- Balance of trade
- Headline and food inflation



Hazards

Conflict

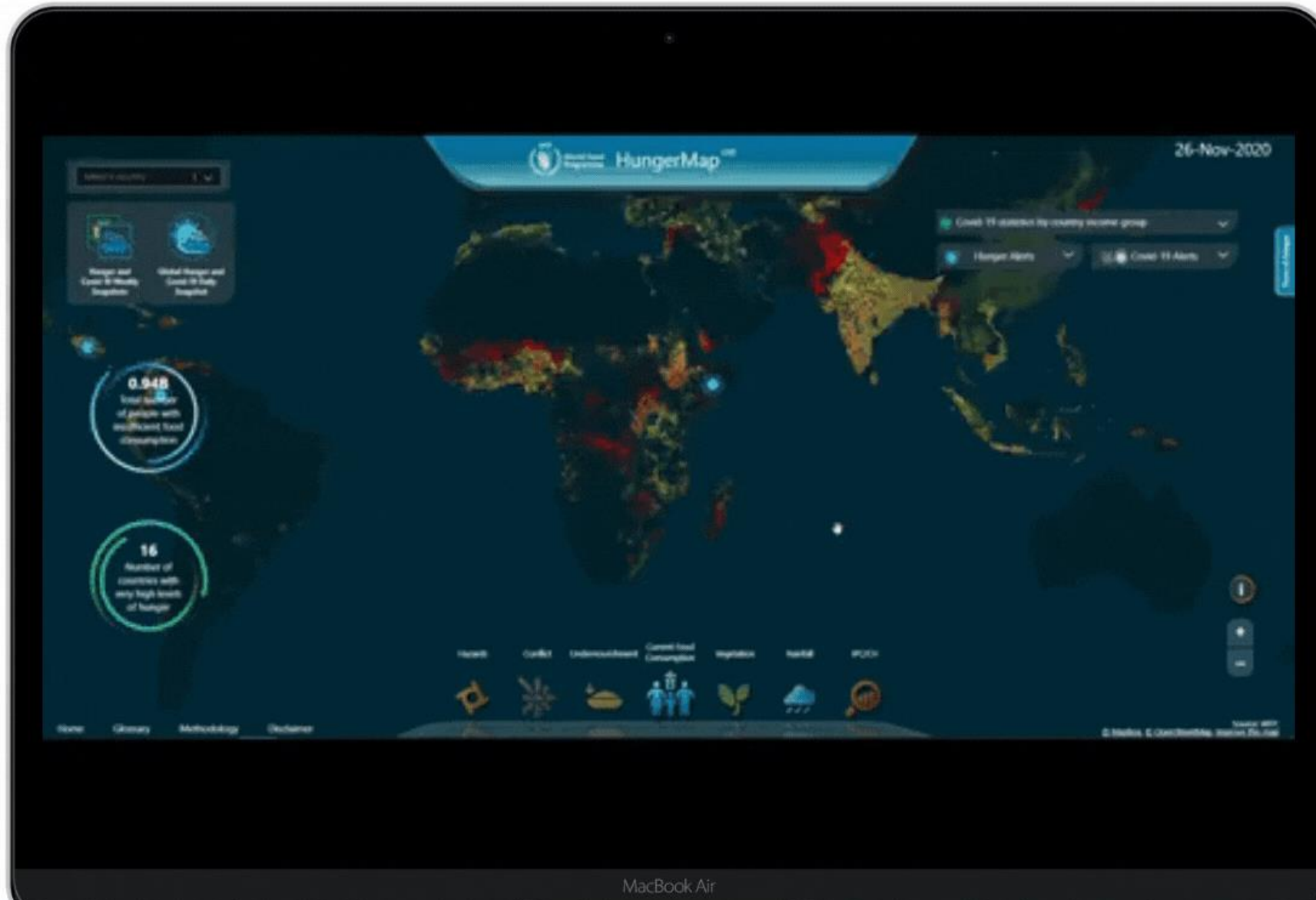
Current Food Consumption

Vegetation

Rainfall

IPC/CH







Thank you!