



Promoting Anticipatory Action for Disaster Mitigation Response Through an Innovative CGIAR AWARE Platform (Early Warning to Action and Finance)

International Water Management Institute (IWMI)

18th September 2023

Niranga Alahacoon

Innovative water solutions for sustainable development

Food · Climate · Growth

International Water Management Institute (IWMI)



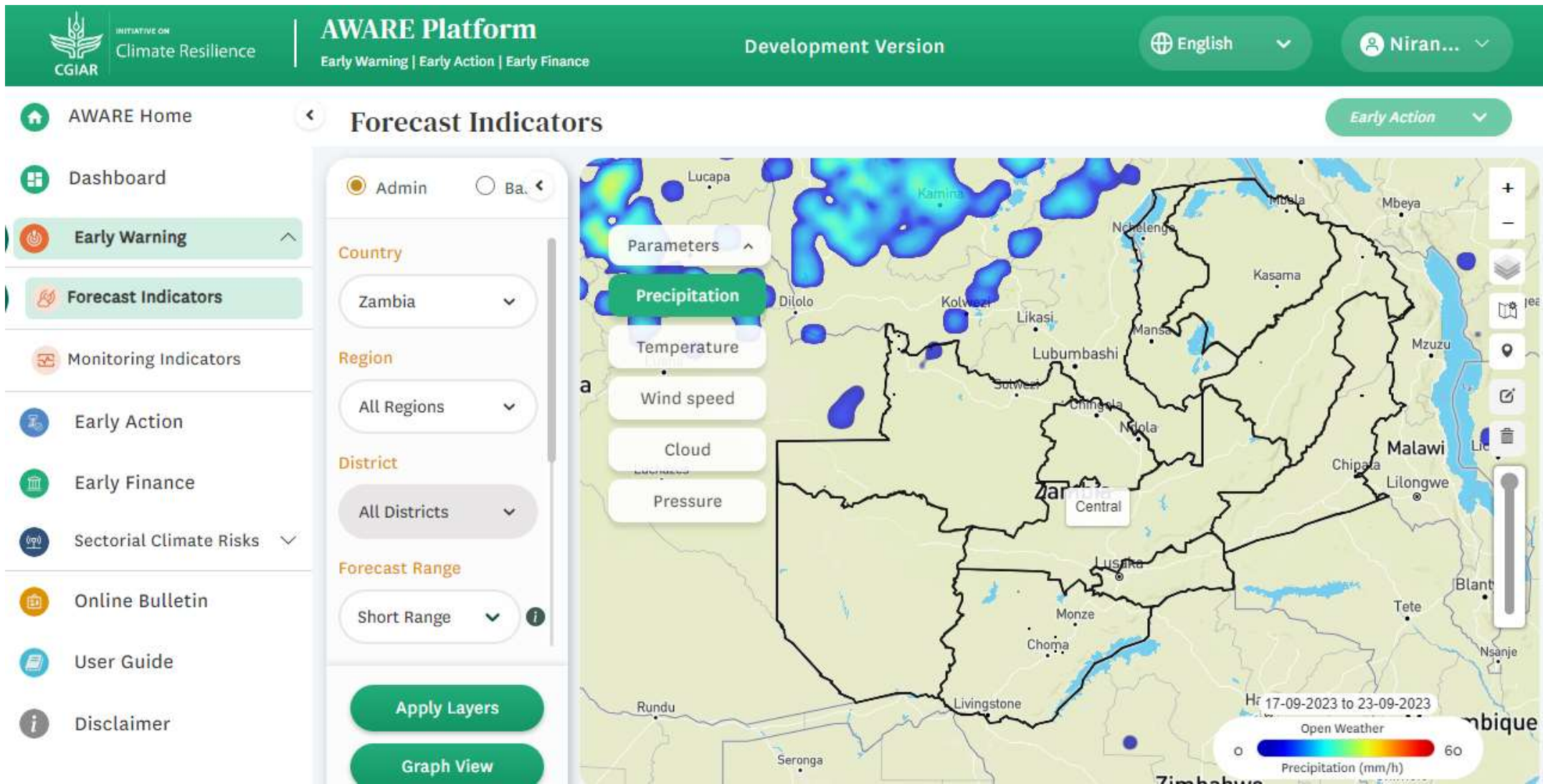
Enabling Responsiveness: AWARE Platform

The AWARE platform supports a broad range of key early-warning indicators to set out the roles and responsibilities of key stakeholders to ensure the mechanism tightens the links between early warning, early action and early finance.

The screenshot displays the AWARE Platform website interface. The header is green and contains the CGIAR logo, the text 'INITIATIVE ON Climate Resilience', the 'AWARE Platform' title with subtext 'Early Warning | Early Action | Early Finance', 'Development Version', 'Sign in', a 'Register Now' button, and a language dropdown set to 'English'. The main content area features six white cards with rounded corners, each representing a platform feature with an icon, title, and description.

Feature	Description
Early Warning	The tool allows the users to monitor past and current climate and vegetation conditions, floods and drought severity, health related issues and price fluctuation of major crops to anticipate the future condition and early actions.
Early Action	This tool summarizes the actions to be measured for different stages of disasters using the Early Warning module to mitigate climate through proactive drought management measures.
Early Finance	Provides overview and reporting of early finance opportunities based on the actions taken by institutes.
Sectorial Climate Risks	Provides overview and reporting of climate risk indicators health related issues and price fluctuation of major crops to anticipate the future condition based on the data collected.
Online Bulletin	This tool helps to disseminate drought related information to guide various users for timely early action and decision-making process.
User Guide	User guide provide opportunity for users step wise procedure on the various knowledge products of AWARE for quick access and information sharing.

Early Warning – Forecasting Indicators



Early Warning –Monitoring Indicators

CGIAR INITIATIVE ON Climate Resilience | **AWARE Platform** | Early Warning | Early Action | Early Finance | Development Version | English | Niran... | Early Action

Monitoring and Indicators

Admin Basin

Indicators

Drought

Flood

Precipitation Threshold (in mm)

2.5

Date Range

08/16/2023

09/15/2023

Apply Layers

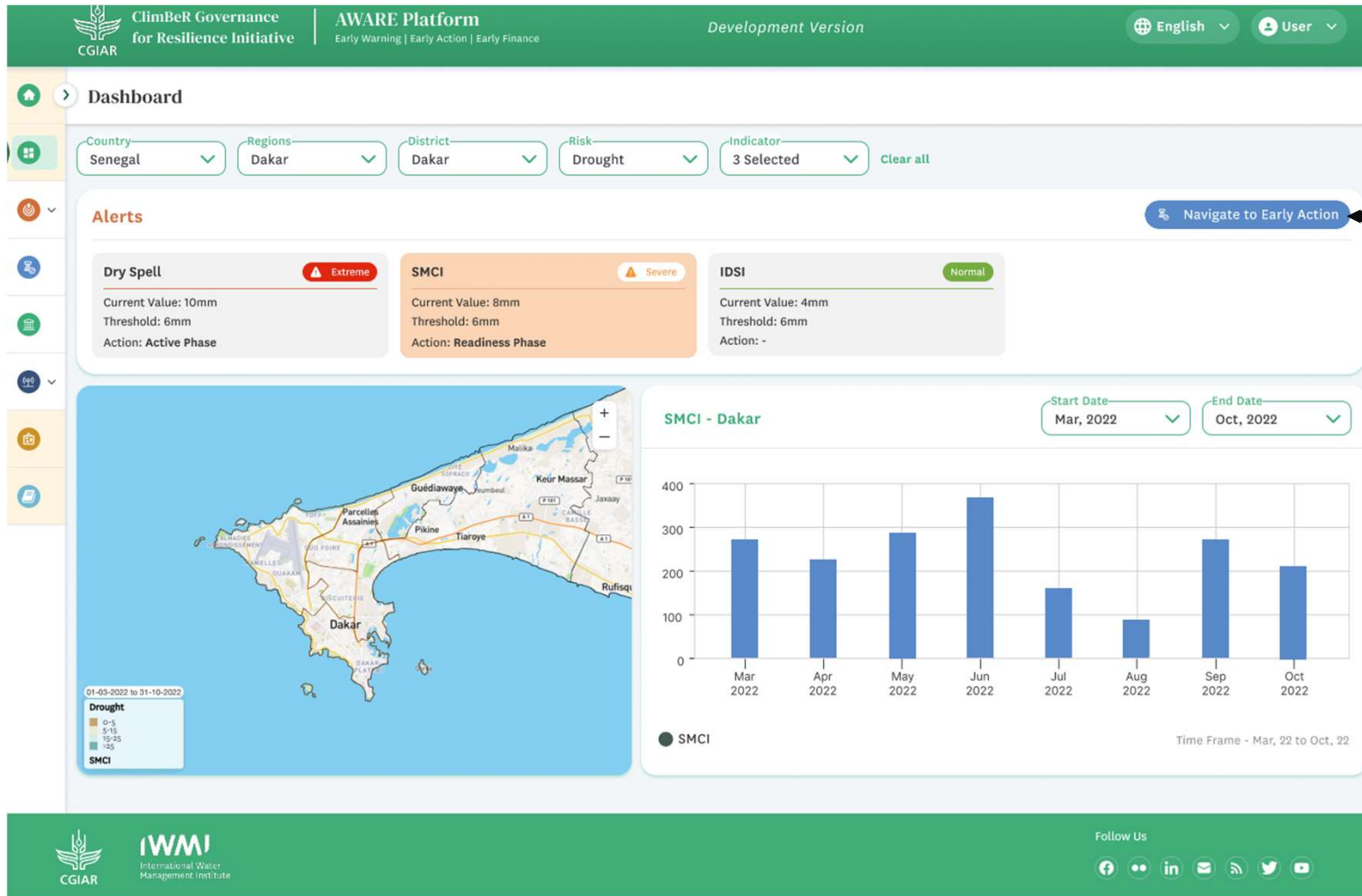
Graph View

Drought

<7
7-10
11-14
15-21
>21

Dry spell (Days)

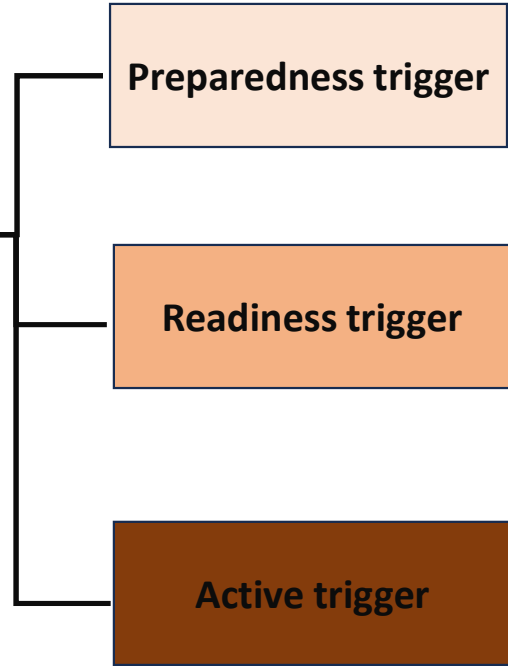
Early Warning – Trigger



Preparedness trigger

Readiness trigger

Active trigger



Anticipatory Action



Preparedness Phase ⓘ



Readiness Phase ⓘ



Active Phase ⓘ

Community Risk Assessment

The Community Risk Assessment (CRA) framework is a potent toolkit for recognizing and prioritizing risks, guiding assessments, and fostering participatory disaster planning. Through techniques like transect walks, risk mapping, and focus group talks, it enables robust data collection, hazard mapping, and vulnerability analysis. Involving community, experts, and stakeholders, the CRA framework unveils insights into hazards, vulnerabilities, and capacities, forming a basis for location-tailored Anticipatory Action Plans (AAPs) that underpin effective disaster management and swift financial mobilization.

Focus Group Discussion

The "Focus Group Discussion (FGD)" is a structured method to engage communities in assessing drought impacts and promoting proactive measures. It seeks to understand natural disaster effects, including water access, livelihood hurdles, and food security. Participants contribute insights for solutions, forming a comprehensive Anticipatory Action Plan (AAP). Through guided group discussions with a moderator, note-taker, and observer, this process generates actionable strategies. It enhances disaster preparedness, fosters resilience, and addresses adverse natural disaster effects.

Key Informant Interviews

The "Key Informant Interview (KII)" employs a semi-structured questionnaire to extract vital insights from knowledgeable insiders in organizations regarding their roles in managing drought emergencies. It explores their involvement, decision-making, and roles in prevention, response, and anticipating disaster impacts. Furthermore, it assesses familiarity with and usefulness of Anticipatory Action (AA), gauges the organization's capacity for AA, and addresses disparities and government mitigation efforts. This method seeks informed opinions, enhancing disaster management strategies through valuable recommendations.

Anticipatory Action



Preparedness Phase ⓘ



Readiness Phase ⓘ



Active Phase ⓘ

Planned Intervention



Education



Water, Sanitation & HealthCare
(WASH)



Restoring Livelihoods and
households' income source

Early Finance



INITIATIVE ON
Climate Resilience

AWARE Platform

Early Warning | Early Action | Early Finance

Development Version

English

Niran...

Early Finance

Generate Report



Education

Total Budget : \$ 5850020



Water, Sanitation & HealthCare
(WASH)

Total Budget : \$ 12200000.09



Restoring Livelihoods and
households' income source

Total Budget : \$ 4740000



Shelter, Housing and Settlements

Total Budget : \$ 15590000



Risk Forecasting, Preparedness and
Preventive measures.

Total Budget : \$ 43530000

Thank you

n.alahacoon@cgiar.org