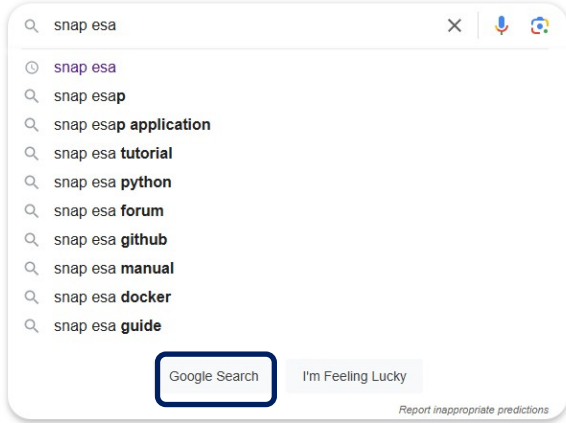


Installation_of_software (SNAP)

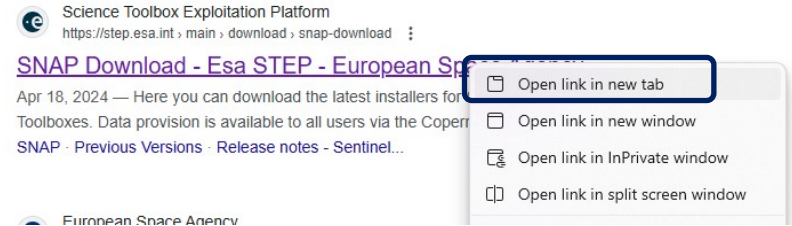
Dr. Arnob Bormudoi (YUCARS)
Yamaguchi University, Japan
bormudoi@yamaguchi-u.ac.jp



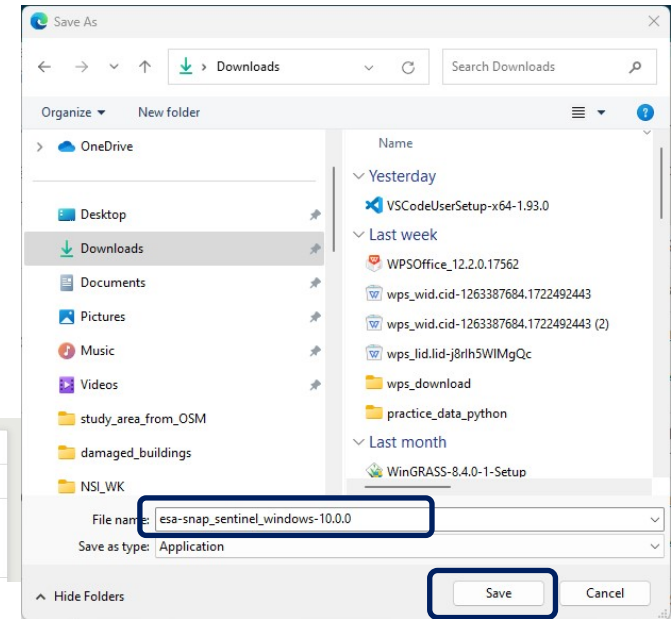
Step-1 Search for SNAP ESA in google



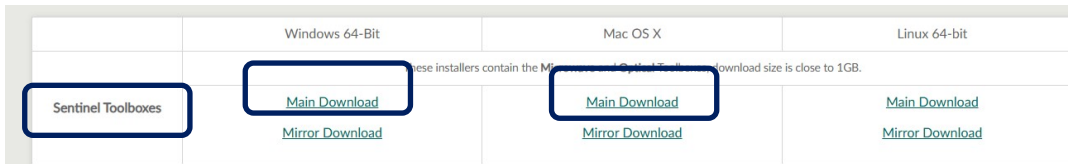
Step-2 Open the link in a new Tab



Step-4 Save the application in your local drive



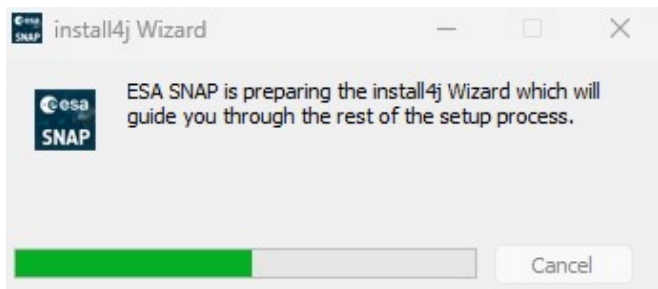
Step-3 Select your respective operating system (Sentinel Toolboxes)



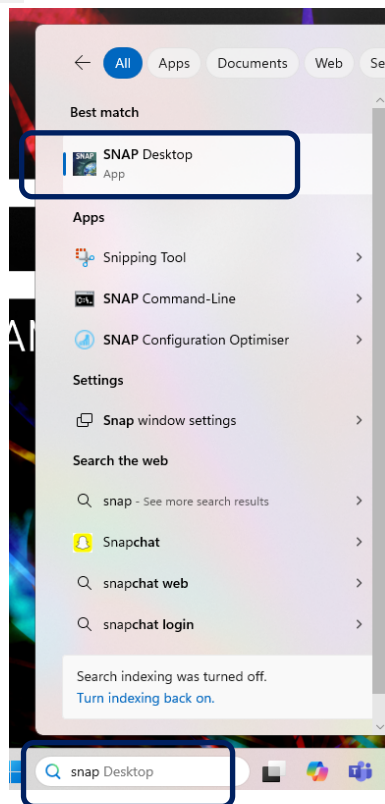
click on 'Main Download'



Step-5 Install the application (double click on the installer/application file)



Step-6 search for SNAP in your machine (once installation is done)



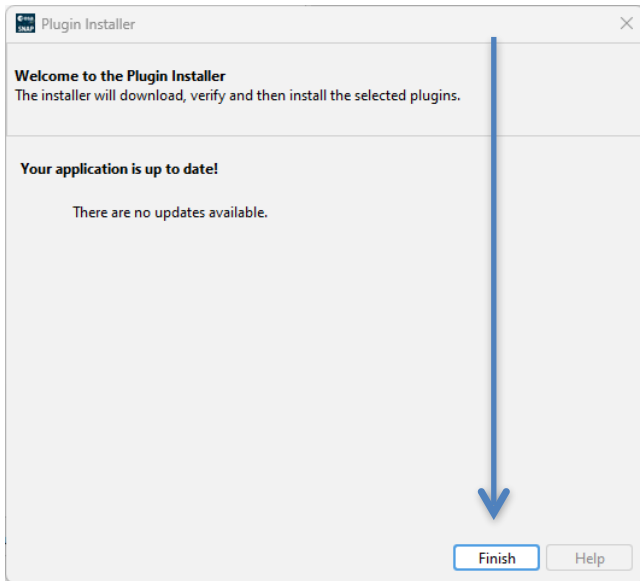
Step-7 Keep a desktop shortcut (double click to start SNAP)



Step-8 SNAP opens



Step-9 Click on 'Finish' to start a project



Thank you

